

SIVER[®]

That's what you need for efficient work!

**Straightening system
for trucks and semi-trailers**

SIVER T



MADE IN RUSSIA



EAC

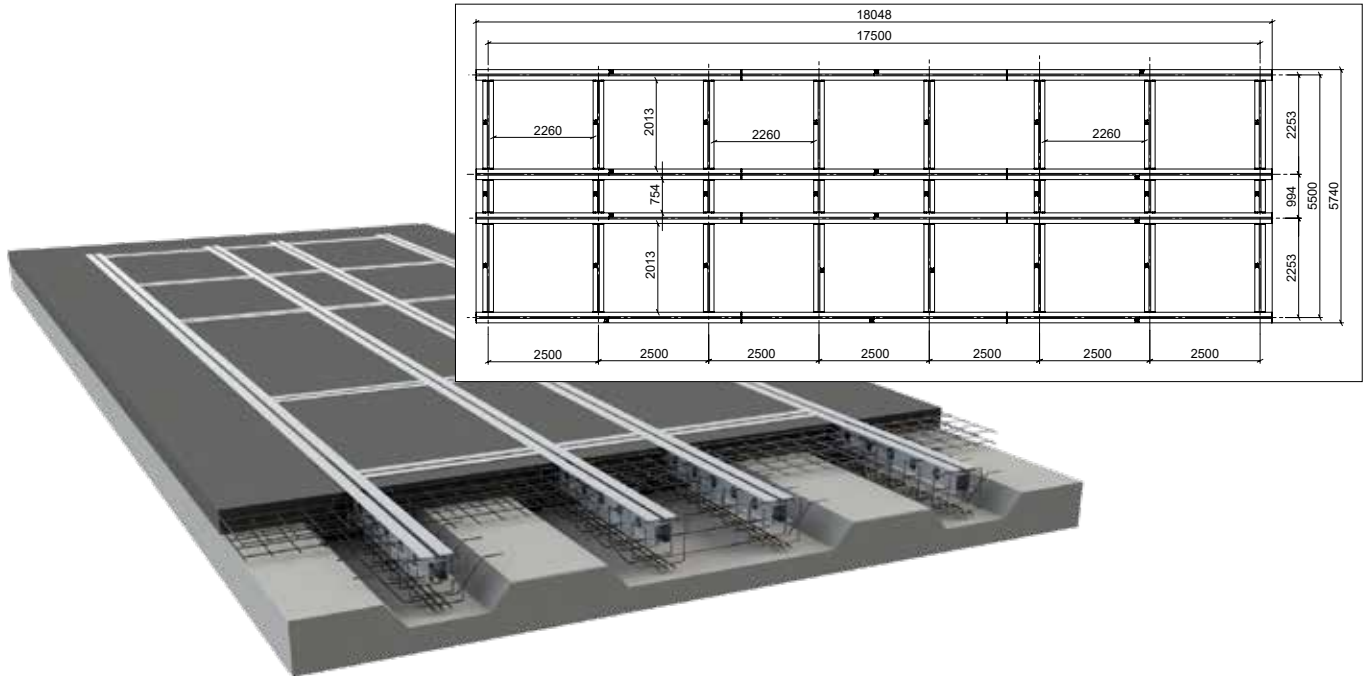


Siver T is the floor-type frame repair system system for trucks and semi-trailers.

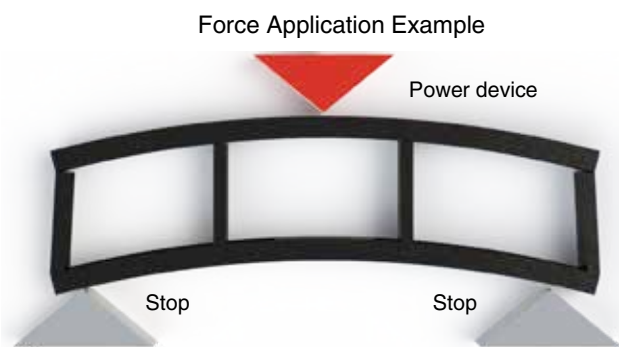
The **SIVER frame straightening system** is based on the use of I-beams cast flush with the workshop floor. Straightening work is to be done without ramps and the workshop can be used for other purposes.

SIVER horizontal power devices and supports, vertical jacks, anchor rollers, floor attachment etc. can be anchored to these floor beams.

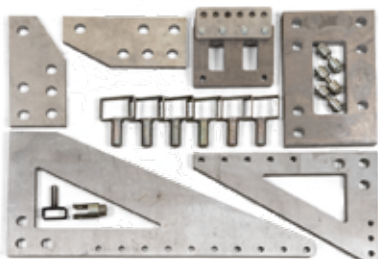
Frame size - 5.7 x 18 m (it is possible to do the frame with your custom sizes).



To correct the geometry of the frame in the horizontal plane a **horizontal power devices** and **supports** are used. A **triangles** allow you to adjust the height of the pulling direction.



Convenient wheels to move. Dismountable handle.
20 tons press capacity
350 mm stroke
Step of installation of power stops - 80 mm

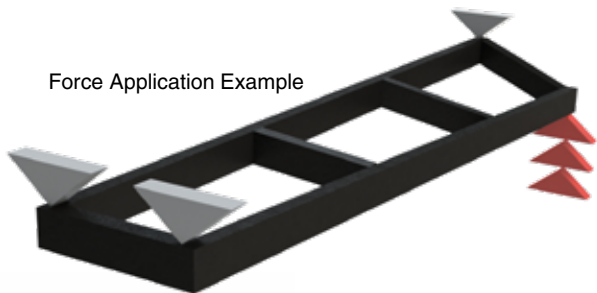


Set of aluminum power triangles with locks



To correct the geometry of the frame in the vertical plane a **vertical power devices (jacks)** are used. It locks the frame by means of chains and anchors rollers.

Force Application Example



Down-pull attachment and chains



Used to fix the truck frame to the rail system, and to change the direction of straightening.



Vertical jack

- Quick and easy movement with spring loaded wheels
- Easy height adjustment with gas spring
- Additional fixing of the rod when working without connecting to the hydraulic system
- 20 tons hydraulic cylinder
- Minimum height - 500 mm
- Maximum height - 1250 mm
- Height adjustment step - 50 mm
- Stroke - 350 mm



Swivel support



Hydraulic C-clamps with a force of 10, 20 or 40 tons are used to correct creases and local damage to the frame, as well as for pressing and riveting.



To control power units, jacks and C-clamps, it is possible to use manual and air hydraulic pumps, as well as a special hydraulic station on 4 devices at the same time.

Air hydraulic pump station

- Control of 4 hydraulic cylinders at the same time.
- Force control with pressure gauge.
- Reinforced hydraulic hoses 8m – 4 pcs.
- Max operating pressure – 700 bar
- Oil tank volume – 20 L



Additional equipment and accessories

Set of hooks for straightening truck frames

Set of hooks for straightening I-frames of semi-trailers



Hook for frames of trailers and semi-trailers

Support for hydraulic cylinder 20 t with mounts



Additional equipment and accessories

Tool Boards for
storing your tools and
accessories
Sizes – 1.9x3x0.8 m.
Racks – 3 pcs
Tool Holders – 42 pcs
Protective mates



Movable power unit for
straightening damaged
truck cabs.
Hydraulic cylinder 10t.
Height – 3.5m.
Length – 1.9 m.



SIVER JSC is a modern factory equipped with high-tech machines providing high quality of products.



The manufacturer reserves the right to alter product specifications
and/or package components without any notice

SIVER JSC
27 Novoslobodskaya St., Kaluga, Russia, 248025
tel: +7 4842 79 18 04
sale@siver.ru

siver.ru